

OCTOBER 2025

NDVS/SB OUTREACH NEWSLETTER

NDVS/SB provides individualized services and resources to infants, children, and adults with visual impairment to empower them in achieving their goals.

TRIVIA

Take this quiz on
our history to test
your knowledge of
NDVS/SB!

WHERE (CITY/TOWN)
AND WHEN (YEAR)
WAS THE NORTH
DAKOTA SCHOOL FOR
THE BLIND
ESTABLISHED?

WHAT YEAR DID NDSB
OPEN ITS MODERN
GRAND FORKS
FACILITY?

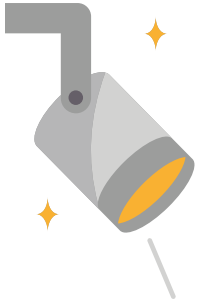
WHAT YEAR DID THE
SCHOOL FOR THE
BLIND CHANGE ITS
NAME TO ND VISION
SERVICES/ SCHOOL
FOR THE BLIND?

HOW MANY
SUPERINTENDENTS
HAVE WORKED AT
NDSB OR NDVS/SB?

HOW MANY YEARS
HAS PAUL OLSON
BEEN
SUPERINTENDENT?

IN WHAT AREA OF
THE FACILITY WAS
THE POOL
ORIGINALLY
LOCATED?

**ANSWERS ARE ON THE
NEXT PAGE!**



Resource Spotlight: Let's Talk Transition!

Perkins is offering a webinar series on transition this school year for parents and professionals. These free monthly workshops will help you learn the many aspects of transition planning for young adults with disabilities. All sessions take place in the evening for one hour, making it easy to fit into your schedule. For more information and to register, visit <https://www.perkins.org/transition-center/transition-planning-resource-center/transition-talks-family-workshops/> The sessions and dates are listed below.

OCTOBER 21

SUPPORTING YOUNG
ADULTS AT HOME:
UNDERSTANDING
PCA AND ADULT
FOSTER CARE

NOVEMBER 18

THE SIBLING
EXPERIENCE

JANUARY 20

FROM HIGH SCHOOL
TO THE WORKPLACE:
SETTING AN
EXPECTATION FOR
EMPLOYMENT

MAY 19

EMPOWERING
FATHERS



TRIVIA ANSWERS

WHERE AND WHEN WAS THE NDSB ESTABLISHED? IN BATHGATE, ND, IN 1908. **WHAT YEAR DID NDSB OPEN ITS MODERN GRAND FORKS FACILITY?** 1961. **WHAT YEAR DID THE ND SCHOOL FOR THE BLIND CHANGE THEIR NAME TO ND VISION SERVICES/SCHOOL FOR THE BLIND?** 2001. **HOW MANY SUPERINTENDENTS HAVE WORKED AT NDSB OR NDVS/SB?** 8 (B.P. CHAPPLE, HERBERT D. JEFFREY, CHARLES BORCHERT, ALAN MEALKA, BETTY BENDER, MICHAEL GRAHAM, CARMEN SUMINSKI, PAUL OLSON). **HOW MANY YEARS HAS PAUL OLSON BEEN SUPERINTENDENT?** 12 - SINCE 2013. **IN WHAT AREA OF THE FACILITY WAS THE POOL ORIGINALLY LOCATED?** THE COMMONS.